



STEP I: SURFACE PREPARATION

Prepare and Restore

I. Wood Cleaners & Coating Preparation Products

Option 2: *Liquid Concentrate*

Wolman® Deck & Fence Brightener Wood Cleaner & Coating Prep

Where to Use: Universal wood cleaner, suitable for all wood species. Ideal for new cedar, redwood and exotic hardwoods, which exhibit tannin extractive bleeding, and weathered, pressure-treated lumber, like pine, hemlock and fir.

Product Type: Liquid Concentrate. Mix 1 part *Deck & Fence Brightener* with 4 parts water.

Purpose: Cleans and prepares wood for coating. Enables the proper penetration/adhesion of protective water sealers and pigmented stains:

- **On Uncoated, New Wood:** Prepares the surface by opening wood pores and eliminating surface barriers.
- **On Uncoated, Weathered Wood:** Restores a clean, bright, natural look by removing ground-in dirt, mildew and algae stains. Also removes dark tannin stains from tannin extractive bleeding, and rust stains from nail bleed.
- **On Previously Sealed, Weathered Wood:** Removes old, residual, clear water repellents/water sealers and weathered, lightly pigmented finishes.

What Makes Deck & Fence Brightener Unique?

Liquid concentrate Wolman *Deck & Fence Brightener* is fortified with oxalic acid, an active ingredient highly effective in removing iron stains from nail bleed and dark brown or black stains caused by tannin extractive bleed, a condition commonly associated with relatively new Cedar, Redwood, Mahogany, Ipe' and other highly resinous woods. The concentration of oxalic acid in *Deck & Fence Brightener* is as high as can be achieved and still package, sell and use safely. Because of its concentration, the product works quickly – a short, 10 minute dwell time will clean and restore wood to its clean, bright, natural look. Plus, a thickening agent in the formula increases its speed and effectiveness on vertical surfaces.

Like *DeckBrite*, *Deck & Fence Brightener* cleans weathered wood by removing dirt, grayed wood fibers and stains from mildew, mold, algae and other fungi. New Cedar and Redwood are purged of "mill glaze", a surface barrier to proper coating penetration.





STEP I: SURFACE PREPARATION

Prepare and Restore

Why was this Product Developed?

In the late-1990's, this product was launched to meet the needs of consumers and contractors who desired an easy-to-use, concentrated liquid cleaner and surface preparation for all types of exterior wood, including pressure-treated wood, Cedar, Redwood and exotic hardwoods.

Contractors especially find this product convenient to mix with water, since cold tap water works as well as warm. Many pressure-washing contractors prepare the cleaning solution at home, before heading out to a job site.

Key Performance Features:

- Prepares new wood surfaces for finishing by opening wood pores for better coating penetration and performance. Eliminates mill glaze from new Cedar and Redwood.
- Cleans and brightens weathered wood. Restores the natural, like-new appearance by removing:
 - UV-damaged, gray wood fibers
 - ground-in dirt
 - stains from mildew and algae
 - nail bleed / rust stains
- Removes dark tannin bleed from tannin-rich Cedar, Redwood, Mahogany, Ipe' and more.
- Removes invisible traces of old water repellent from weathered, previously sealed wood.
- Non-chlorine bleach formula – will not damage wood's cell structure or leave a bleached out look.
- Fast-acting, highly concentrated formula – loosens and lifts dirt, stains and discoloration in just 10 minutes.

Other Important Features:

- Clings to vertical surfaces for more effective cleaning of deck spindles, posts, railings, and lattice, fences and siding.
- 100% biodegradable – safe to use near grass, plants or shrubs.
- Easy-to-use – just mix, spray, and power-wash away.



STEP I: SURFACE PREPARATION

Prepare and Restore

Usage Guidelines:

Where to Use: Decks, fences, siding, shakes and shingles, boat docks, boardwalks, landscape timbers, outdoor furniture and décor, gazebos and arbors, storage sheds, play equipment/gym sets and more.

How to Use:

Application Methods: For quick application, use airless sprayer or pump-style sprayer (no aluminum parts – active ingredient, oxalic acid, is corrosive to aluminum). The *Wolman Backsaver Sprayer* is recommended for easiest and safest application. Refer to *Product Tech Data Sheet - Safety and Handling instructions and original equipment manufacturer's sprayer directions before using*. Also can be applied by mop, roller or brush.

Coats Required: One (1) application is generally sufficient. Heavily weathered, extremely dirty or badly stained areas may need a second application.

Exposure Time: Minimum 10 minutes per application.

Coverage Per Gallon: Approximately 150 sq. ft., depending on wood age and species, surface porosity and method of application.

Application Instructions:

Before You Start: Pre-wet and/or cover surrounding grass, plants, and shrubs surrounding wood structure to be cleaned. **Cover any exposed aluminum surfaces with plastic (not paper) to prevent discoloration, as this product is corrosive to aluminum.** Sweep away any loose dirt and debris. If the surface is extremely dry or in direct, hot sunlight, dampen with fresh water to cool.

Weather Conditions: Use product when outside air temperature is between 40° F and 90° F.

Product Preparation: Based on mixing directions below, combine *Deck & Fence Brightener* liquid concentrate with water to make cleaning solution. Each gallon of solution cleans approximately 150 sq. ft., depending on wood age, species, surface porosity and application method.

Application Steps:

Step 1 – Mix:

- Combine 1 gallon concentrate with 4 gallons water to make 5 gallons solution, enough to clean/prepare approximately 750 square feet. If less than 5 gallons of solution is needed, use a plastic outdoor measuring device to combine 1 part concentrate with 4 parts water.
- Stir occasionally for 1 minute, or until solution is thoroughly blended.
- Do not mix with any other products.



STEP I: SURFACE PREPARATION

Prepare and Restore

Step 2 – Apply:

- Pre-wet surface with fresh water.
- Working on 5-10 boards (20 sq. ft.) at a time, apply solution. On vertical surfaces, work from the bottom to the top of the structure.
- Let solution work 5-10 minutes. Re-wet periodically if solution dries prematurely.

Step 3 – Brush or Pressure Wash:

- Using moderate pressure, **briefly scrub** surface with a the *Wolman WoodWorx Deck Brush* or other short-bristle broom or brush,

OR

Pressure wash, using a 40° tip and 1,500-2,500 PSI for pressure-treated wood and hardwood, 500-1,000 PSI for Cedar and Redwood. Move lengthwise with boards to avoid cut marks across grain.

Either technique helps ensure old coating is entirely dissolved and removed.

Step 4 – Rinse:

- If pressure washing is not employed, **after scrubbing, rinse thoroughly with a garden hose**, using the highest pressure nozzle setting available.
- On a vertical surface, continually rinse brightened areas to avoid streaking.
- Rinse any wood fibers off surrounding surfaces immediately.

Repeat Steps 2-4 on each 5-10 board section (20 sq. ft.) until entire surface has been cleaned. **When finished, repeat the SPLASH TEST to confirm water absorption.** Rinse surrounding grass and plants thoroughly. When dry, wood surface should appear clean, bright and free of mildew and algae stains.

Dry Time: After cleaning, let wood surface dry to the touch before applying a water-base finish. See “Before You Start” label directions on water base coating label for further guidelines. If applying an oil base finish, wait at least 24 hours to allow wood to dry out thoroughly.

Clean Up: Clean tools and equipment after use with soap and water.

Storage: Store unused liquid concentrate in the closed, original labeled container.

Other Technical Data and Precautions:

See Technical Data Sheet and container labeling for further information.



STEP I: SURFACE PREPARATION

Prepare and Restore

Wood Cleaners & Coating Preparation Products

Summary and Recap:

Why shouldn't I use chlorine bleach to clean wood?

Chlorine bleach and water mixtures made at home, or chlorine-based products purchased at retail are effective at removing mildew, but ARE NOT as effective as commercial wood cleaners at:

- removing dirt deposits and degraded (gray) wood surface fibers that interfere with the penetration and adhesion of protective coatings.
- removing tannin extractive stains or nail bleed.
- restoring a natural, wood-toned appearance – instead, they leave wood with a white-washed or bleached-out look.

With repeated use over time, chlorine bleach can also soften and degrade wood lignin, the “glue” that holds wood fibers together, creating an unsound surface that can adversely affect the durability of a wood coating.

The following page provides more details on the inadequacy of chlorine bleach in cleaning/ preparing wood for coating.

How do I determine which Wolman wood cleaner to use?

Wolman DeckBrite is a fast-acting powder concentrate cleaner and surface preparation for pressure-treated wood, plastic/ wood composites and “weathered” Cedar, Redwood and exotic hardwoods. It prepares the surface for sealing or staining by removing dirt, mildew and algae stains, and weathered gray wood fibers, as well as invisible traces of old water repellent from wood that had been previously coated with a clear water sealer.



Wolman Deck & Fence Brightener is a fast-acting liquid concentrate which can be used to clean and prepare any wood type or species. It is ideally suited for use on “brand new” exotic hardwood, Cedar, Redwood, or other highly resinous wood structure. It prepares the wood surface in the same way as the original powder concentrate formula, but also removes nail bleed/ rust stains, dark tannin stains and mill glaze. The latter two are often present on new, unweathered Cedar and Redwood.





STEP I: SURFACE PREPARATION

Prepare and Restore

**** WARNING ****

WHY EASY-TO-USE BLEACH PRODUCTS DO NOT WORK!

Chlorine bleach-based cleaning products contain sodium hypochlorite or calcium hypochlorite. These chemicals are effective against mildew but do little to remove dirt or other surface deposits. After all, if bleach were effective in removing dirt, you wouldn't have to add detergent to it when washing clothes.

Basically, there are three reasons why outdoor wood turns gray and ugly.

1. **Dirt** – Ground-in dirt and surface dirt build-up will discolor wood.
2. **Mildew** – Biological fungi growth on wood causes unsightly stains.
3. **UV Degradation** – Harmful UV rays from the sun can cause wood to gray over time.

When you spray chlorine bleach (sodium hypochlorite) onto the wood surface, *all you are doing is removing the mildew stains.*

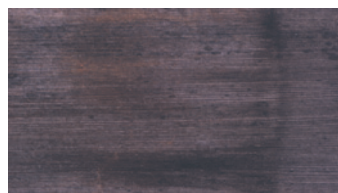
Don't be fooled by manufacturers who claim their bleach is "buffered."

Bleach is bleach. If it comes in a bleach-type bottle, chances are it is a solution of sodium hypochlorite. Sodium hypochlorite will not remove ground-in dirt and will not remove the gray wood surface fibers that have been degraded by the sun. **In fact, chlorine bleach can break down and dissolve wood fibers, creating an unsound surface that can lead to poor adhesion of future coatings.**

Poor surface preparation leads to premature coating failure.

As any good painter knows, **the number one reason for coating failure is poor surface preparation.** The following pictures show *Wolman RainCoat Clear Water Repellent* on wood. The wood panel on the left was first cleaned with a popular chlorine bleach-based "deck wash" cleaner (which was deemed "safe" and "EZ" by the manufacturer) while the wood panel on the right was prepared with *Wolman DeckBrite*. Both cleaning products were used according to their printed label instructions.

Unretouched Photo of Wood Weathered for 6 months



Cleaned with
Chlorine bleach-based deck wash product.
Coated with *Wolman RainCoat Clear*.



Cleaned with
Wolman DeckBrite.
Coated with *Wolman RainCoat Clear*.

As you can see, **a coating can fail up to 60% faster** when applied to wood cleaned with a chlorine bleach product. Needless to say, if a coating you've applied fails prematurely, you can say goodbye to your R&R (Repeat & Referral) business.